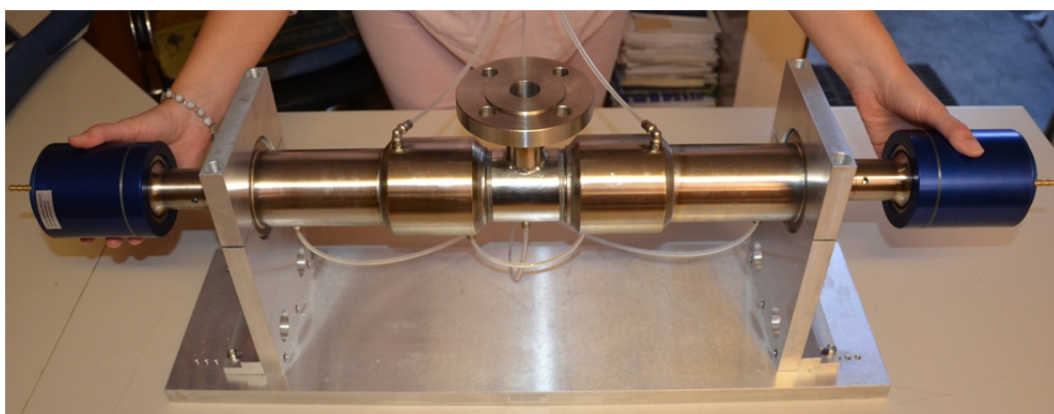
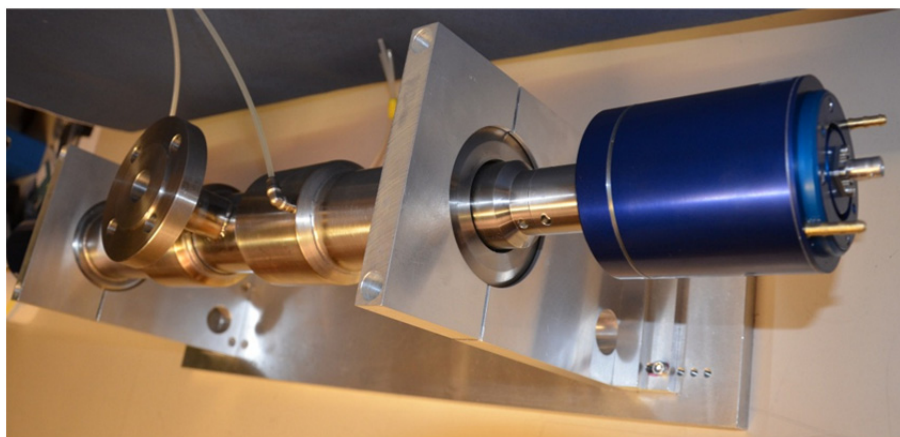
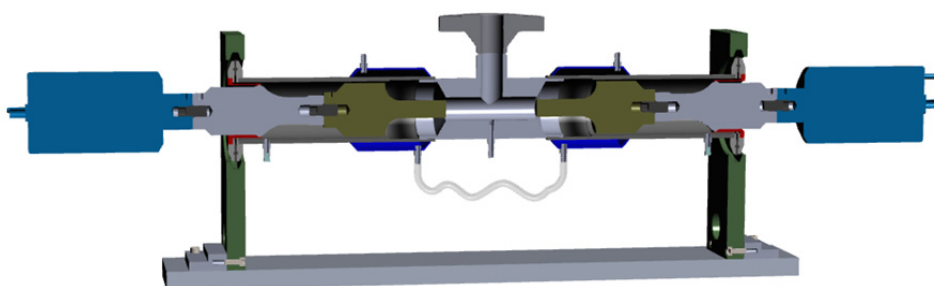
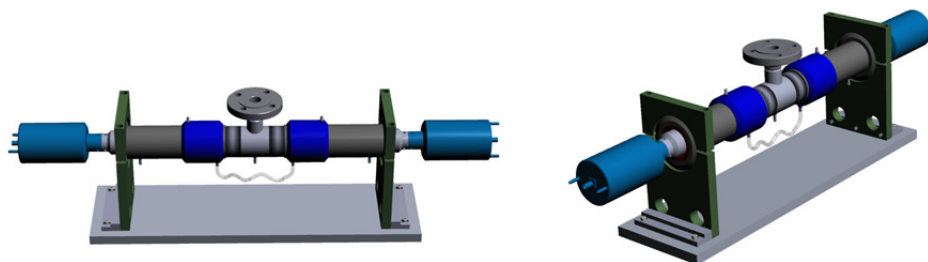
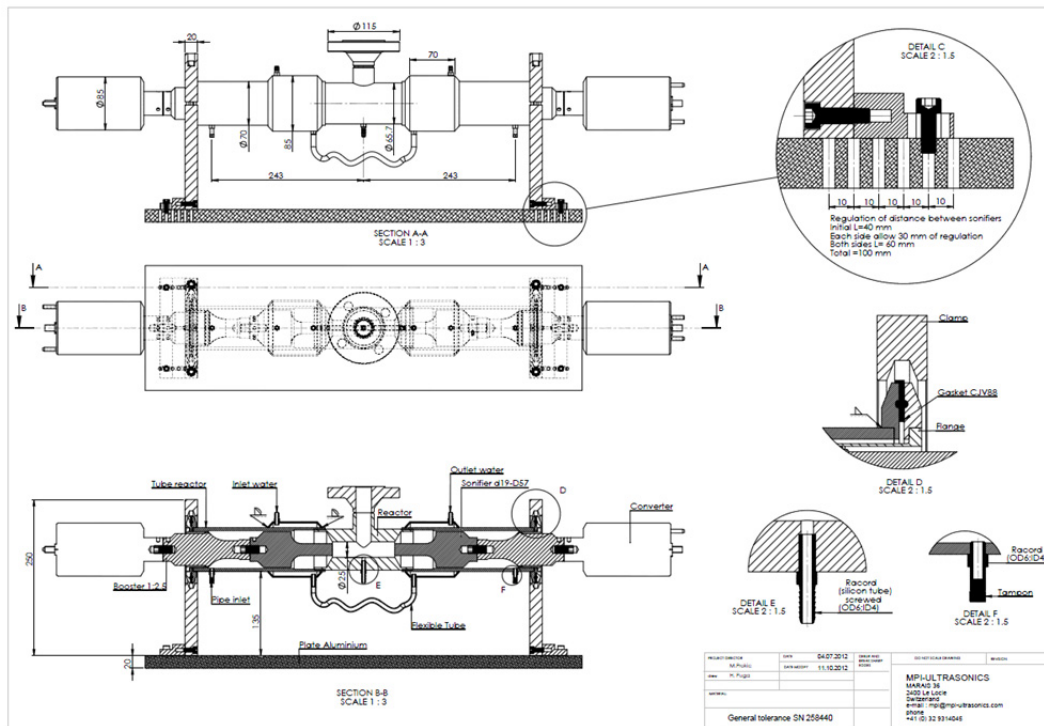


## NANO-PARTICLES - NANO-DIAMONDS REACTOR





- Based on very high intensity of cavitation (two mutually opposed ultrasonic jets)
- Oversized: 2 x 3 kW ultrasonic converters, 2 x 3 kW Ultrasonic generators, 20 kHz
- Water-cooled ultrasonic converters for long, continuous operations
- Water jackets for reactor chamber
- Adjustable reactor chamber
- Inlets and outlets for liquid circulation